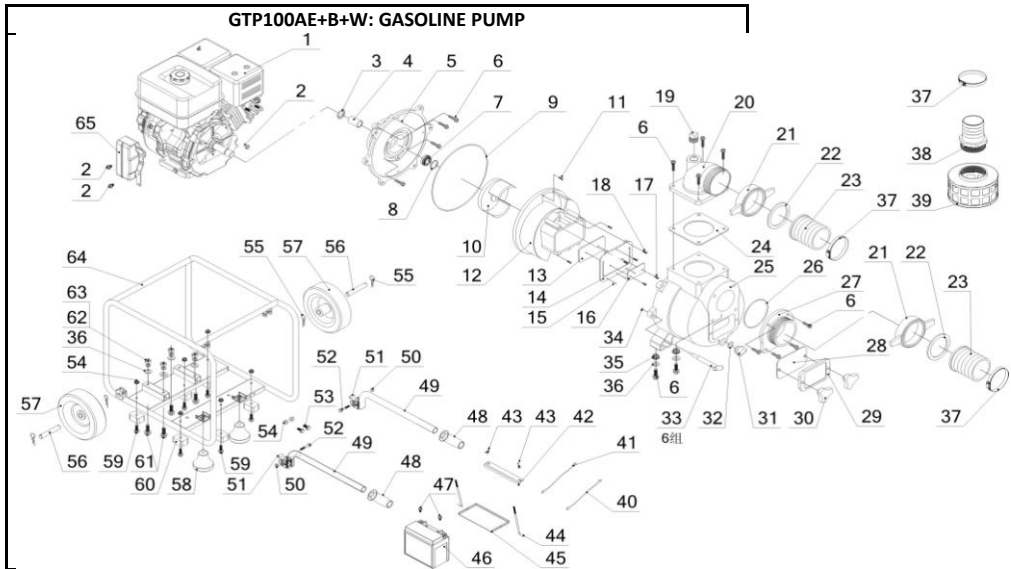
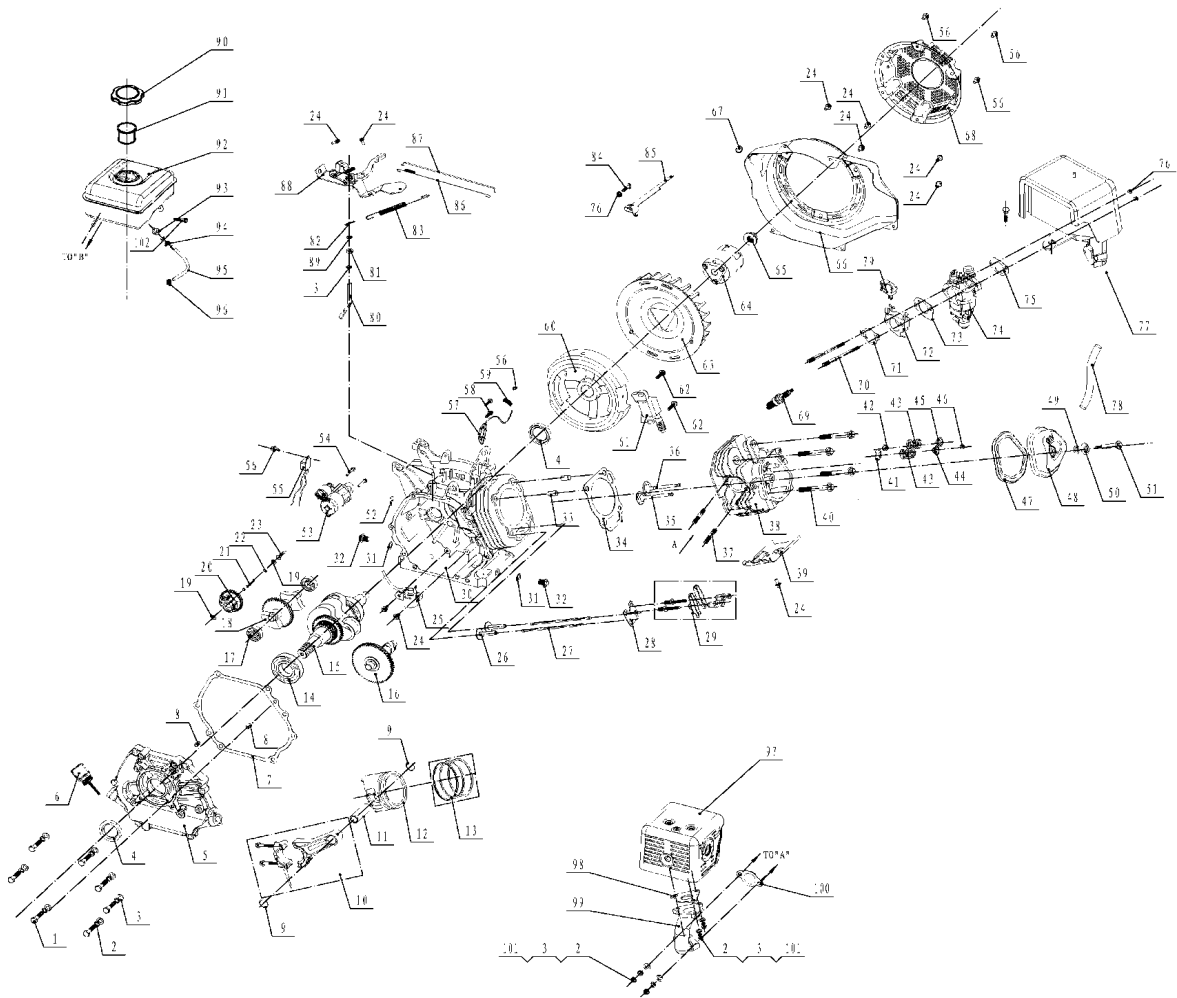


GP100水泵机组配置表



No..01205000060				
No.	CODE	DESCRIPTION	QTY.	REMARK
1	01205000060	UP188 gasoline engine	1	
2	511050801201	flange bolt M8X12	3	
3	039120102700	washer	1	
4	039120102800	seal sleeve	1	
5	039120100100	housing of pump	1	
6	511061003001	flange bolt M10X30	14	
7	039120100200	Seal	1	
8	039120102900	washer φ25	1	
9	039120100300	O ring	1	
10	039120100400	water pump impeller	1	
11	511070602009	bolt M6*20	3	
12	039120100500	volute casing	1	
13	039120100600	back clamp	1	
14	039120100700	check valve	1	
15	039120100800	pin	3	
16	039120100900	front clamp	1	
17	511010601503	flange bolt M6X15	2	
18	515020401003	bolt M4*10	3	
19	039120101000	plug packing	1	
20	039120101101	Outlet (BSP thread)	1	
21	039040102200	joint grip	2	
22	039120101300	rubber washer	2	
23	039120101400	pipe joint	2	
24	039120101500	gasket	1	
25	039120101600	Pump cover	1	
26	039120101700	O ring	1	
27	039120101801	Inlet (BSP thread)	1	
28	039120101900	gasket	1	
29	039120102000	clean-up cover	1	
30	039120102100	bolt	2	
31	039030120200	plug packing	1	
32	039010120100	O ring	1	
33	039120102200	T type bolt	6	
34	039120102300	O ring	6	
35	512041000000	flange nut M10	2	
36	513011000001	washer φ10	6	
37	039040102300	Rear housing	3	
38	039120102500	connecting pipe	1	
39	039120102600	weldment	1	
40	029969900204	battery wire (black) -700mm	1	
41	029969900207	battery wire (red) -700mm	1	
42	029960900601	battery platen	1	
43	512020600001	butterfly nut A - M6	2	
44	029969900304	battery hook(L=145)	2	
45	029969910301	battery bracket assembly	1	
46	029960200100	battery 12AH	1	
47	511050601201	flange bolt B - M6X12	2	
48	029050100701	handle cover	2	
49	029050120001	handle	2	
50	512070600000	flange nut M6	2	
51	029050100601	rotational pipe	2	
52	511050604501	flange bolt B - M6X45	2	
53	511050802501	flange bolt B - M8X25	2	
54	512040800001	flange nut M8	8	
55	029050290004	axle pin for 6145	4	
56	029050100410	axle	2	
57	029970000505	8 inch inflation wheel (decentration)	2	
58	029050100202	shock absorber	2	
59	511050802001	flange bolt B - M8X20	6	
60	029910100100	shock absorber	6	
61	511051004001	flange bolt B - M10X40	4	
62	513021000000	spring washer φ10	4	
63	512011000002	flange nut M10	4	
64	032160200000	frame	1	
65	029990800002	electric starter box	1	



NO.	CODE	DESCRIPTION	QTY.	REMARK
1	511050804501	Bolt M8*45	7	
2	513020800002	washer 8	12	
3	513010800002	washer 8	10	
4	522010100601	Oil sealing B3552	2	
5	012050000300	Crankcase cover	1	
6	012040100000	Oil dipstick	2	
7	012050000400	Crankcase cover gasket	1	
8	514010801400	Pin 8*14	2	
9	518042000000	Piston pin circlip	2	
10	012050300000	Connect rod assy	1	
11	012050001200	Piston pin	1	
12	012050001100	Piston	1	
13	012050200000	Piston ring set	1	
14	521010010301	Bealing 60000 35	1	
15	012050001302	Crank shaft P1	1	
16	012050400000	Cam shaft	1	
17	521010010601	Bealing 60000 15	2	
18	012050600000	Balancing shaft	1	
19	019990000600	Speed swinging rod washer	2	
20	012050100000	Speed governing gear	1	
21	019990002100	Speed governing shaft	1	
22	012020000600	Snap ring	1	
23	019990001900	Speed governing push dish	1	
39	012050001000	Lead wind cover	1	
40	511051008001	Bolt M10*80	4	
41	019990003300	Exhaust spring set	1	
42	019990003400	Oil seal	1	
43	019990003200	Valve spring	2	
44	019990003000	Exhaust spring seat	1	
45	019990003100	Intake spring seat	1	
46	019990002900	Cap	1	
47	019990002600	Cylinder head cover gasket	1	
48	012041800000	Cylinder head cover	1	
49	019990002400	cylinder head cover Bolt gasket	1	
50	019990002300	cylinder head cover Bolt gasket	1	
51	019990002200	cylinder head cover Bolt	1	
52	019990001800	Crankcase gasket	1	
53	012051000000	Starting Motor	1	
54	511050803501	Bolt M8*35	2	
55	019990001700	Diode	1	
56	511050600801	Bolt M6*8	5	
57	012021400000	Charge coil	1	
58	511050602803	Bolt M6*28	2	
59	012050002900	Clamp	1	

60	012051200000	Fly wheet assy	1
61	012050001700	Ignition coil	1
62	511050602201	Bolt M6*22	3
63	012050001400	Fly wheet fan	1
64	012050003200	Starting flange	1
65	019990003600	Fly wheel nut M16*1.5	1
66	012050001504	Wind hood	1
67	012020005200	rubber block	1
68	012053200003	Recoil starter	1
69	019990003800	Spark plug F7TC	1
70	516050813401	Studs M8*134	2
71	012050001800	Intel gasket	1
72	012050001900	Carburator cushion block	1
73	012050002000	Carburator gasket	1
74	012050900000	Carburator	1
75	019990004400	Air cleaner gasket	1
76	512040600001	Nut M6	3
77	012050700000	Air cleaner	1
78	012050003700	Breathing tube	1
79	019990004500	Clip	1
80	012050000200	Speed swinging rod	1
81	522010101301	Oil sealing B0814	1
82	019990001600	Speed swinging rod lock clamps	1
83	012050002200	Speed governing spring	1
84	012020004500	Bolt	1
85	012050002600	Speed governing arm	1
86	012050002300	throttle reset spring	1
87	012050002400	Speed governing pull rod	1
88	012051100000	Speed governing assy	1
89	019990005100	Speed swinging rod washer	1
90	019990001300	Fuel tank cap	1
91	012020003600	Filter Cup	1
92	019990004603	Tank	1
93	019990001201	Connteror	1
94	029019900401	Pipe clamp	1
95	029019900100	Fuel pipe	0,2
96	029019900408	Pipe clamp	1
97	012050800000	Muffler assy	1
98	019990004100	Muffler gasket	1
99	019990004300	Exhaust pipe	1
100	029049910600	Muffler gasket	1
101	512040800001	Nut M8	7
102	511050802501	Bolt M8*25	2